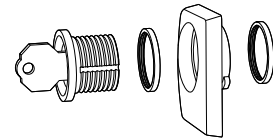


Use hex key to lock/unlock bar

**CYLINDER OPTION**

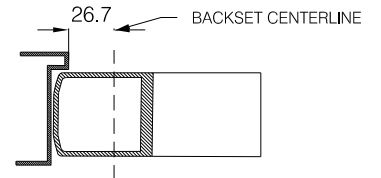


**OUTSIDE CYLINDER PREPARATION**

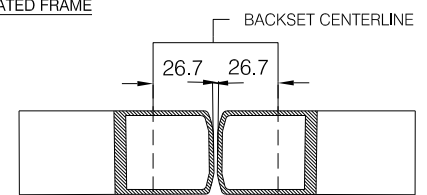
NOTE 2:  
WHEN USING OUTSIDE CYLINDER, DRILL 5.5mm, HOLES FOR # SCREWS BOTH SIDES AND COUNTERSINK INTERIOR ONLY .

1. DRILL Ø5.5mm AND COUNTERSINK HOLES FOR #10.32 FLAT SCREWS
2. THESE DIMENSIONS AND TEMPLATES ASSUME DOOR 44.5mm THINK WITH 3mm STILE WALL

**HOW TO FIND BACKSET**

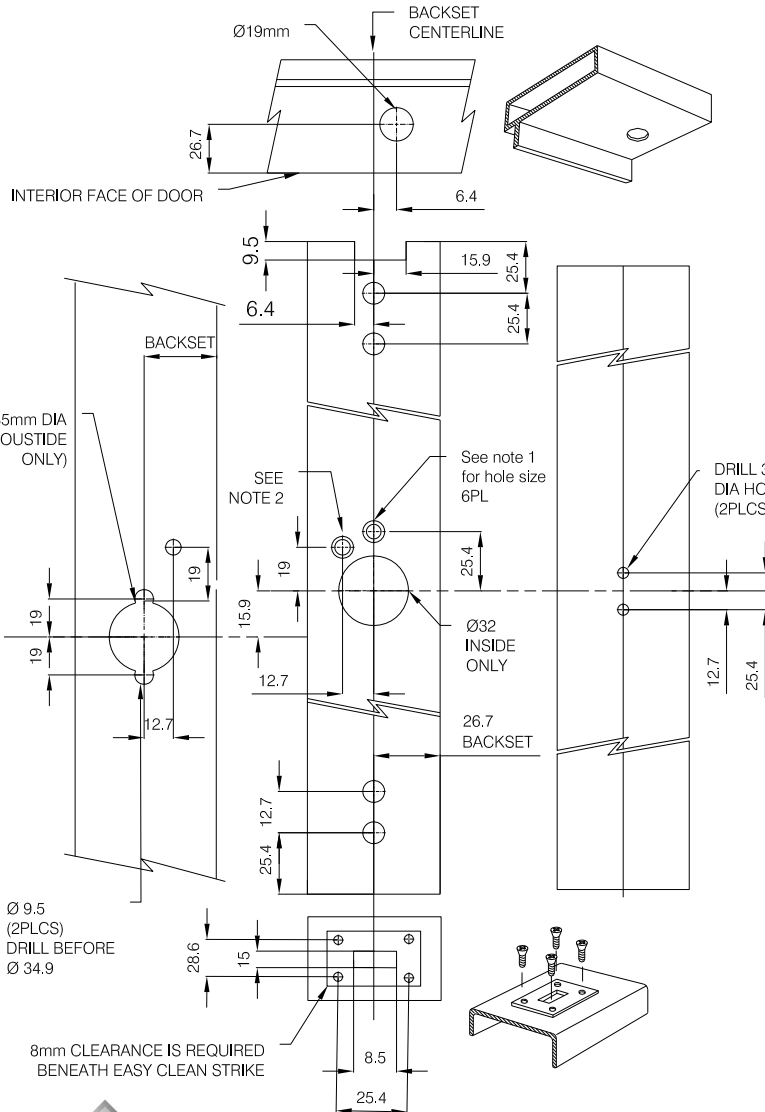
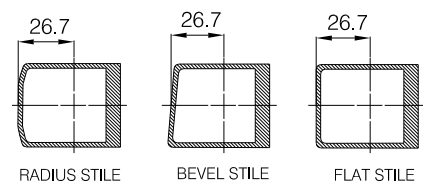


**REBATED FRAME**



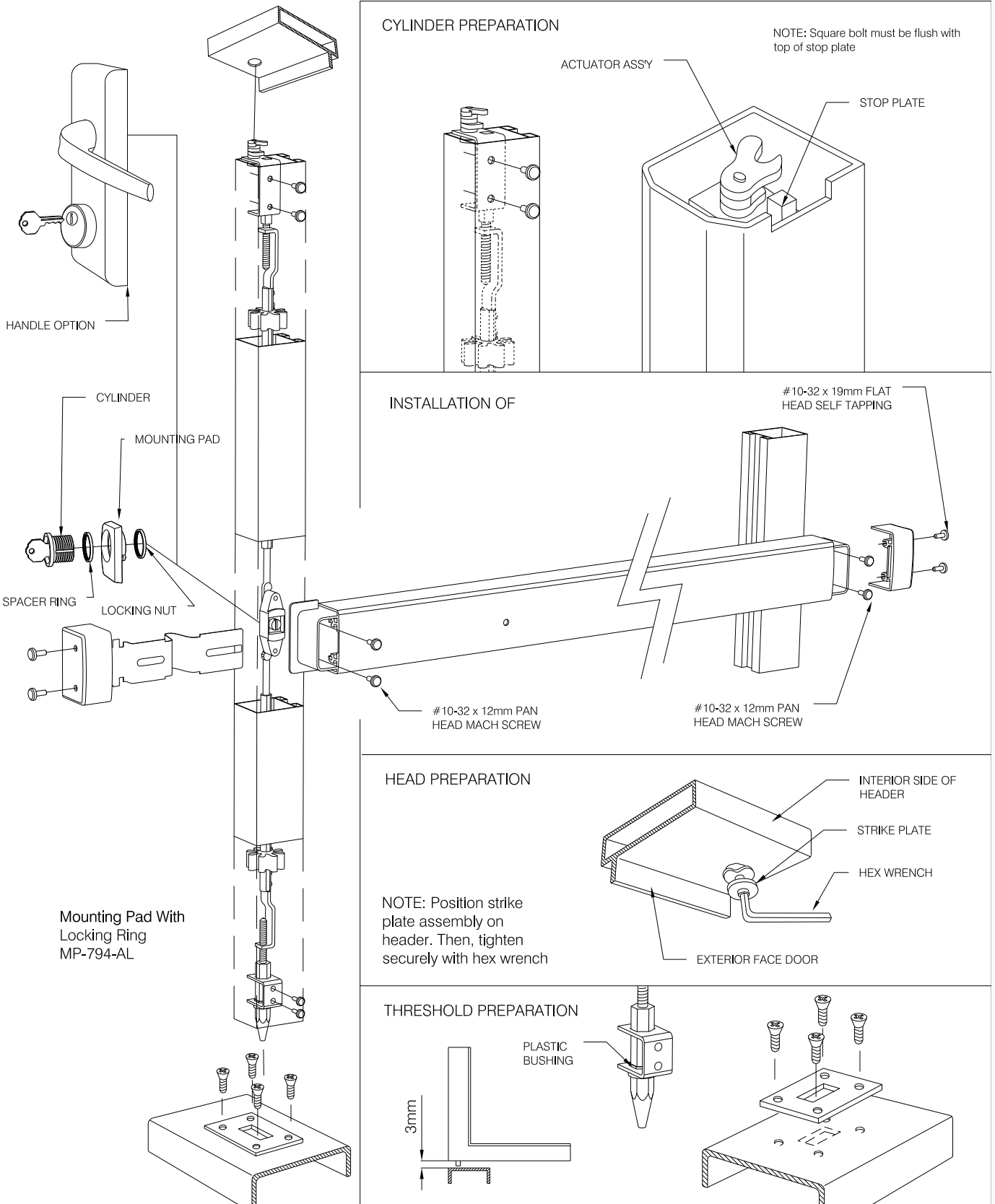
BEVEL AND FLAT STILE APPLY TO SINGLE DOOR ONLY

**PAIR DOOR**



**The Parkside Group Ltd**  
The Willow Centre  
17 Willow Lane, Mitcham, Surrey, CR4 4NX  
Tel: 020-8685 9685 Fax: 020-8646 5096  
Email: axim@parksidegroup.co.uk  
Web Site: www.axim.co.uk

SCALE	NTS @A4
DATE	FEBRUARY 2022
For scaled technical or CAD drawings, please contact AXIM.	

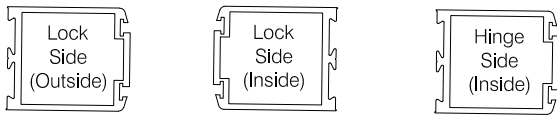
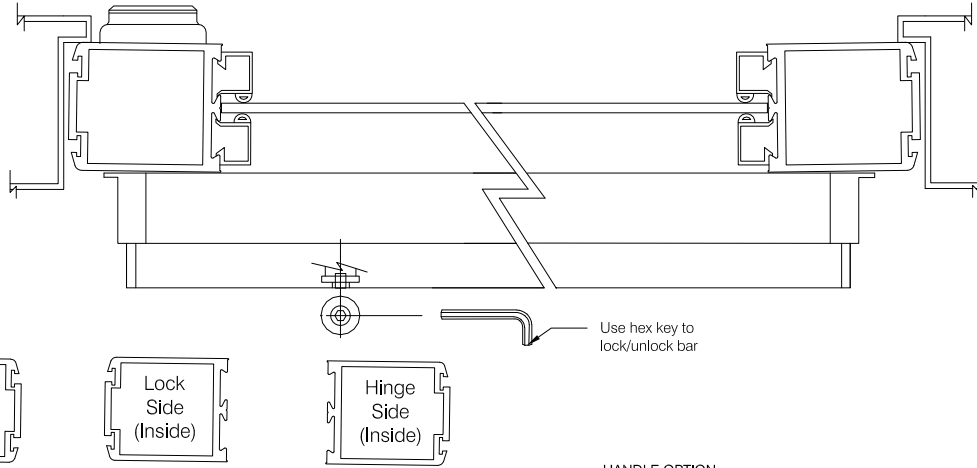


The Parkside Group Ltd

The Willow Centre  
17 Willow Lane, Mitcham, Surrey, CR4 4NX  
Tel: 020-8685 9685 Fax: 020-8646 5096  
Email: axim@parksidegroup.co.uk  
Web Site: www.axim.co.uk

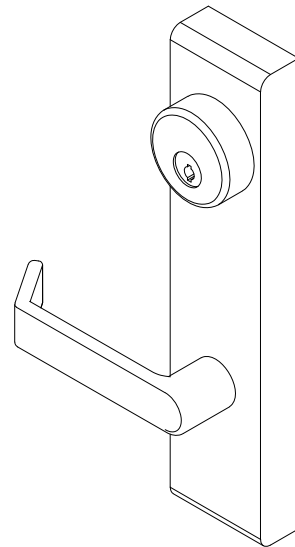
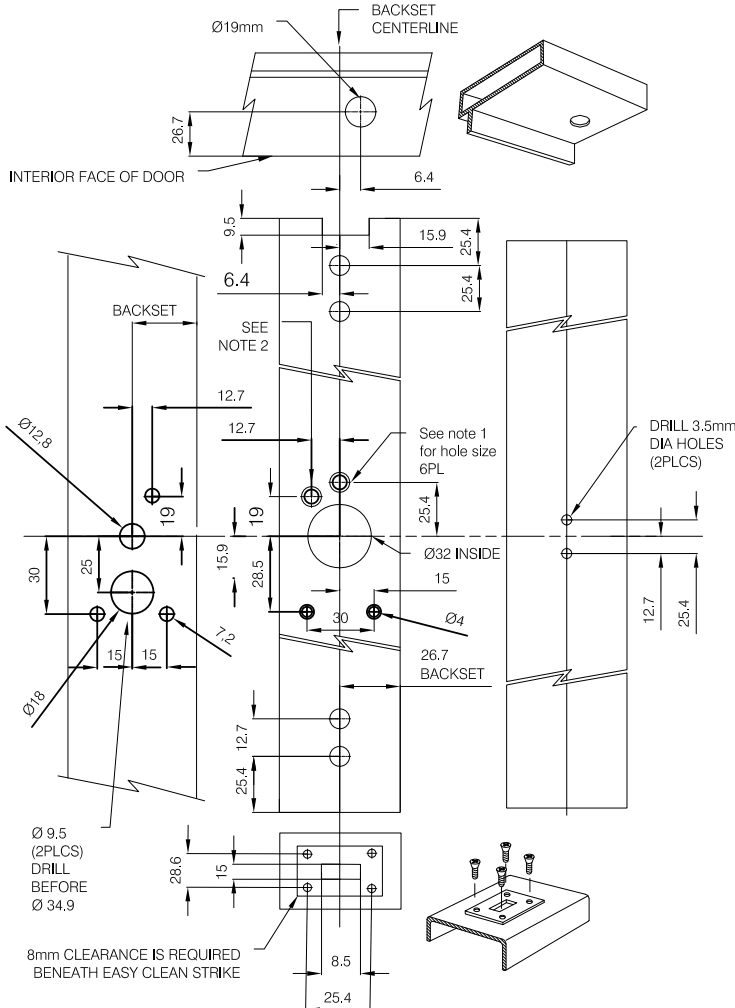
SCALE	NTS @A4
DATE	FEBRUARY 2022

For scaled technical or CAD drawings, please contact AXIM.



Use hex key to lock/unlock bar

HANDLE OPTION



OUTSIDE CYLINDER PREPARATION

NOTE 2:  
WHEN USING OUTSIDE CYLINDER, DRILL 5.5mm, HOLES FOR #10-32 SCREWS BOTH SIDES AND COUNTERSINK INTERIOR ONLY.

1. DRILL Ø5.5mm AND COUNTERSINK 5 HOLES FOR #10-32 FLAT HEAD SCREWS
2. THESE DIMENSIONS AND TEMPLATES ASSUME DOOR 44.5mm THICK WITH 3mm STILE WALL