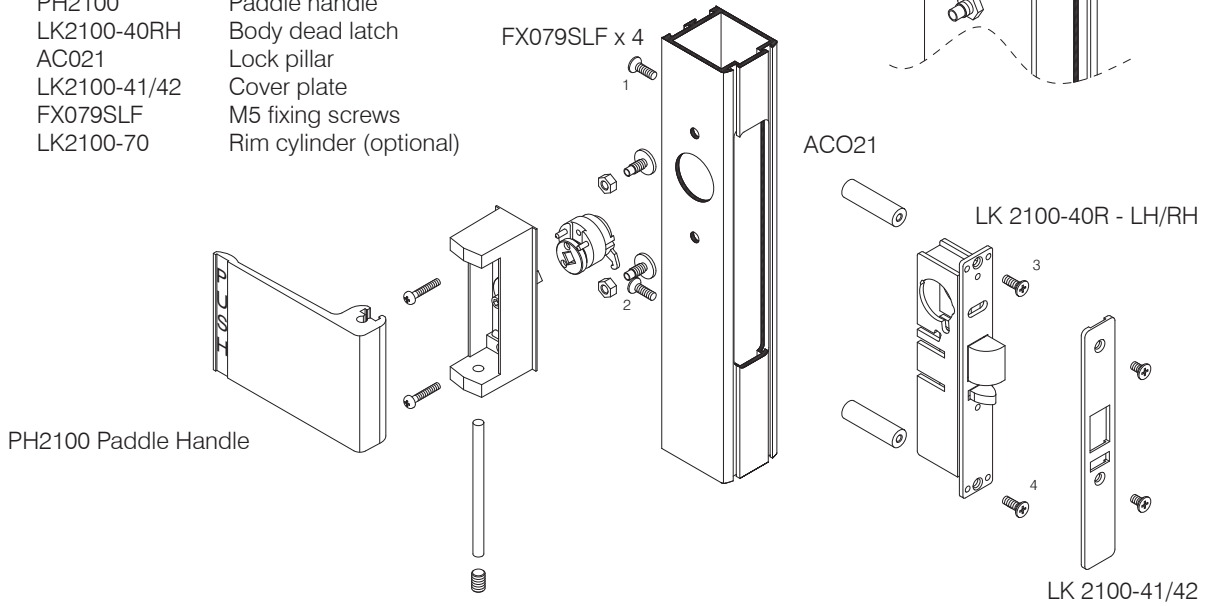


- Complete assembly consisting of:-
- PH2100 Paddle handle
 - LK2100-40RH Body dead latch
 - AC021 Lock pillar
 - LK2100-41/42 Cover plate
 - FX079SLF M5 fixing screws
 - LK2100-70 Rim cylinder (optional)



The Parkside Group Ltd

The Willow Centre
17 Willow Lane, Mitcham, Surrey, CR4 4NX
Tel: 020-8685 9685 Fax: 020-8646 5096
Email: axim@parksidegroup.co.uk
Web Site: www.axim.co.uk

SCALE NTS @A4

DATE AUGUST 2016

For scaled technical or CAD drawings, please contact AXIM.