

FS9500

Universal Application, Multi-Function Floor Hinge.

- One model, four optional spring strengths for every application
- Multiple functions as standard for reduced inventory
- Non-handed, for single or double action door
- Changeable spindle inserts available to suit field conditions
- Max. door weight up to 300kgs
- Hold-open angle available for 90° HO or NHO
- Mechanical Backcheck
- Closing speed variable by adjustable valve
- Max. door opening angle 180°

Technical Data

Spring size		3	4	5
Closing Force	Nm	15	34	44
	Door Width (mm)	Up to 800	800~1200	1200~1400

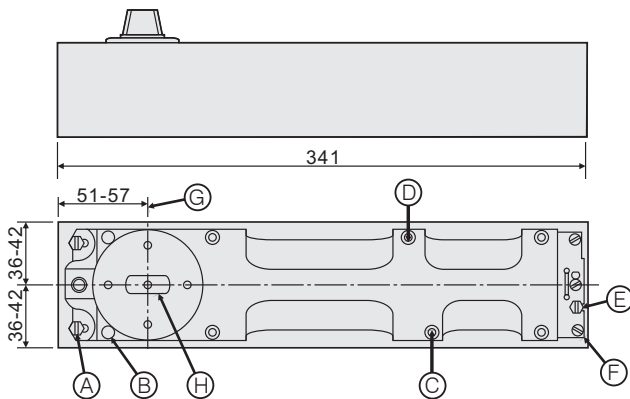
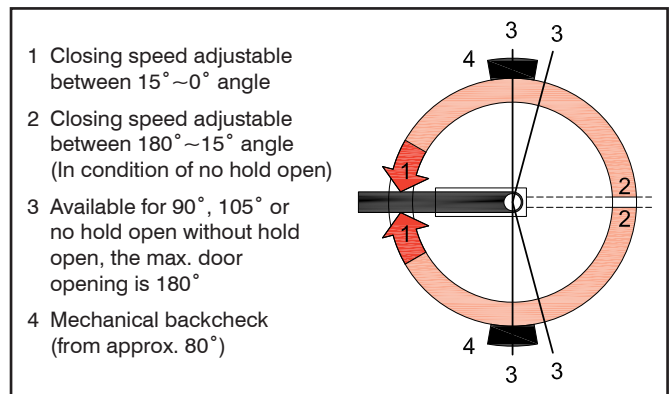
Cement box : 341x78x60 mm
(forward or backward total) : 6 mm

Hold Open

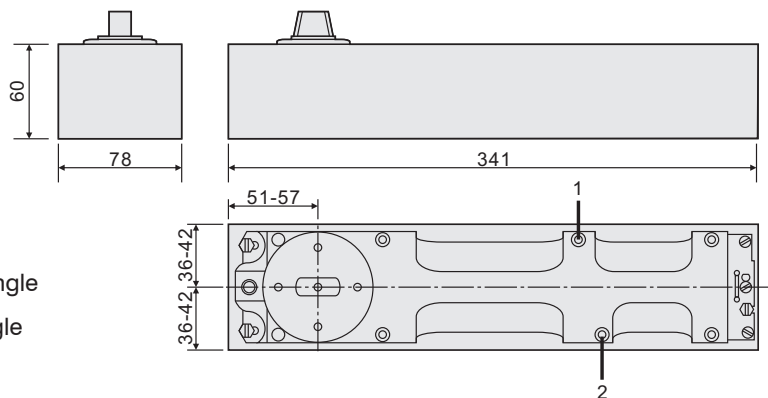
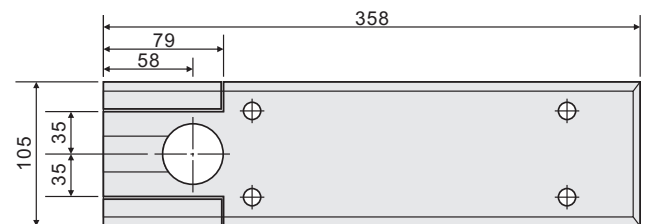
Hold-open: Available for 90°, 105° or no hold open, Without hold open, the max door opening can be 180°.

Backcheck

The backcheck helps to prevent damage of the door and wall when a door is opened with excessive force by people or the wind.



- A = Mounting Screws
- B = Height Adjustment Screws
- C = Latching Speed Valve
- D = Closing Speed Valve for Closing Speed
- E = Mounting Screws
- F = Height Adjustment Screws
- G = Spindle Backset Adjustment
- H = Changeable Spindle



1. Closing speed adjustable between 180°~15° angle
2. Latching speed adjustable between 15°~0° angle

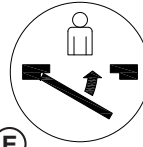
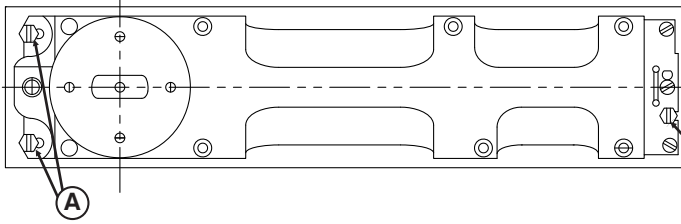


The Parkside Group Ltd

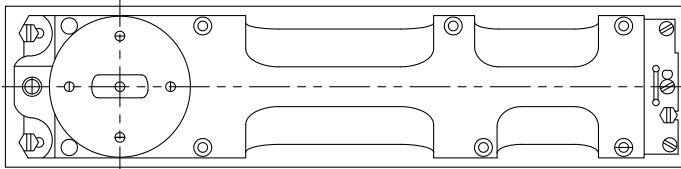
The Willow Centre
17 Willow Lane, Mitcham, Surrey, CR4 4NX
Tel: 020-8685 9685 Fax: 020-8646 5096
Email: axim@parksidegroup.co.uk
Web Site: www.axim.co.uk

SCALE NTS @A4
DATE JULY 2017

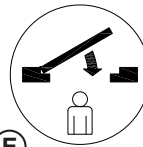
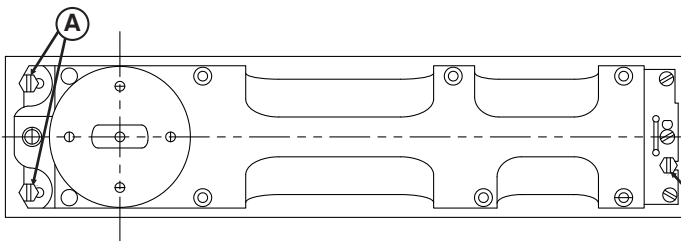
For scaled technical or CAD drawings, please contact AXIM.



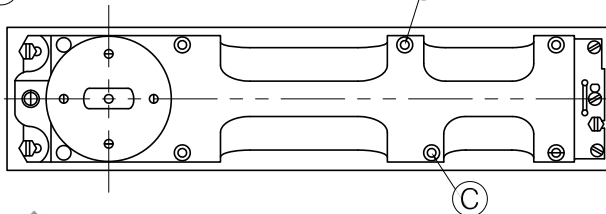
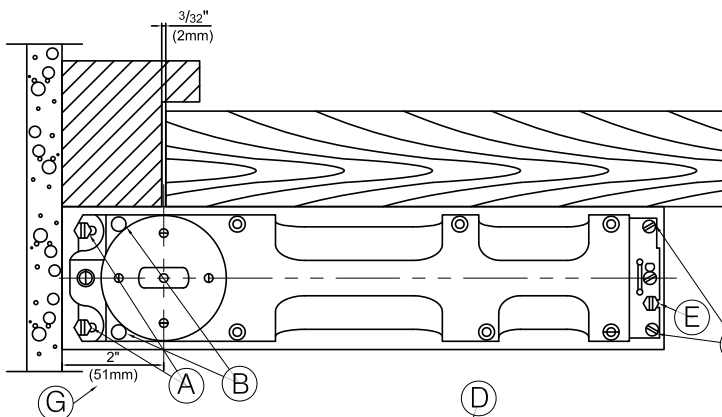
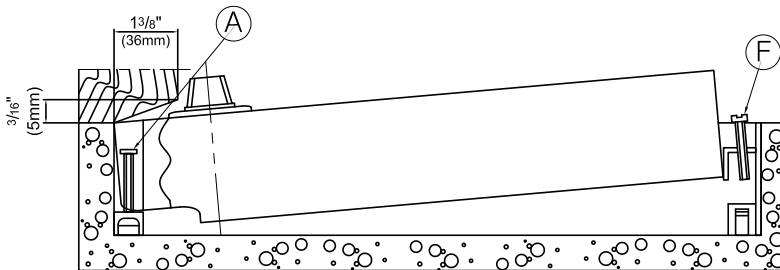
**Right Hand Door
(Left-Hand Reverse Bevel)**
Loosen mounting screws **(A)** and **(E)**
Move closer in cement box as illustrated.



Double Acting Door
Floor closer should be positioned in center of cement box.



**Left-Hand Door
(Right-Hand Reverse Bevel)**
Loosen mounting screws **(A)** and **(E)**
Move closer in cement box as illustrated.



Installation

- 1 The cement case must be installed to allow for a pivot center-line dimension of $2\frac{3}{4}$ " (70mm) backset from finished door jamb. The spindle backset **(G)** can be adjusted $+\frac{1}{8}$ " (3mm) within the cement case.
- 2 The cement case top must be flush with the finished floor. The closer body can be raised approximately $\frac{1}{8}$ " (3mm) with screws **(B)** & **(F)**. The Closer Must Remain Level. Use the appropriate spindle size to achieve the desired clearance.
- 3 Adjust the closer body as required for center-hung or offset applications. Use screws **(A)** & **(E)** to secure the closer body in the cement case.
- 4 Hold-open: available for 90° , 105° or no hold open. Without hold open, the max door opening can be 180° .

Speed Adjustable

- 1 **Valve D:** Closing speed adjustable between $180^\circ \sim 15^\circ$ and (in condition of no hold open)
- 2 **Valve C:** Closing speed adjustable between $15^\circ \sim 0^\circ$ angle



The Parkside Group Ltd

The Willow Centre
17 Willow Lane, Mitcham, Surrey, CR4 4NX
Tel: 020-8685 9685 Fax: 020-8646 5096
Email: axim@parksidegroup.co.uk
Web Site: www.axim.co.uk

SCALE	NTS @A4
DATE	JULY 2017
For scaled technical or CAD drawings, please contact AXIM.	