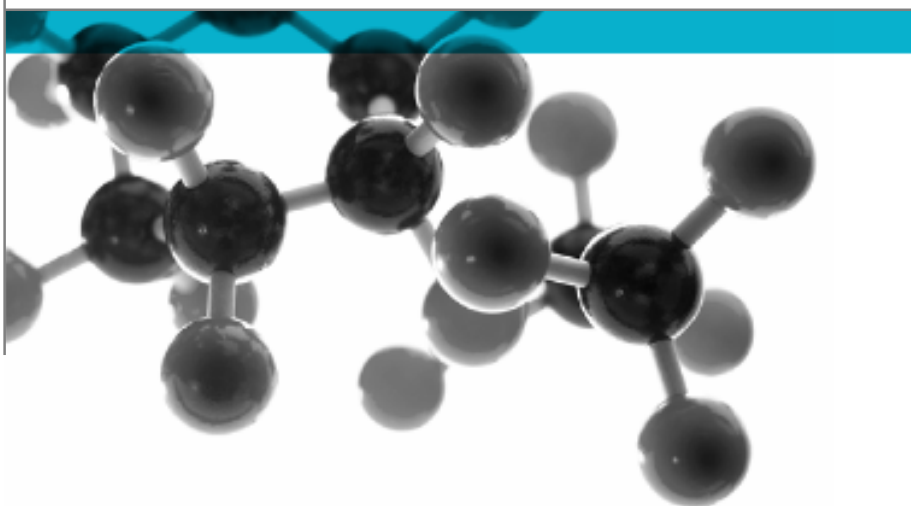


# APT1- DDA Power Curves on Door closers



Product : Axim TC 8802-00 Transom mounted door closer

A Report To: The Parkside Group Limited  
Unit 5, The Willow Centre  
17 Willow Lane  
Mitcham  
Surrey  
CR4 4NX

**Date:** 09 September 2010

**Copy:** 1

**Issue No.:** 1

Page 1

Document Reference: 196747/c

**Testing  
Advising  
Assuring**

## TEST CONCLUSIONS

Samples of:

Manufacturer : The Parkside Group Limited  
Product : Transom mounted door closer  
Model : Axim TC 8802-00

have been tested in accordance with:

APT1- DDA Power Curves on Door Closers

By Exova Warringtonapt [A UKAS accredited Testing Laboratory (No. 0621) and EC Notified Body number 1104 ]

At Key Industrial Park, Fernside Rd., Willenhall. West Midlands. WV13 3YA.

Results and comments as detailed below:

Results as detailed below:

The Axim TC 8802-00 Transom mounted closer has an opening force (0-30°) less than 30N when fitted to a minimum width door of 963mm, and has an opening force (30-60°) less than 22.5N when fitted to a minimum width door of 1212mm tested in laboratory conditions.

Therefore the suitable width of door for the Axim TC 8802-00 Transom mounted door closer fixed in the above fixing position is 1212mm

NOTE 1 : The closing force at 4 - 0° is power size 2, due to falling between the 13 – 18Nm category.

NOTE 2 : BS 8300 Requirements are for the whole door set and therefore the minimum width of suitable door will increase when the door closer is fitted with all other items of ironmongery on site.

## AUTHORISATION

Tests performed by: Steve Wilkes, Deputy Operations Manager

Report issued by: Steve Wilkes, Deputy Operations Manager

Signed : 

Date : 01 September 2010

For and on behalf of Exova Warringtonapt laboratories Ltd

Report authorised by: Ian Keeling, Laboratory Manager.

Signed : 

Date :

For and on behalf of Exova Warringtonapt laboratories Ltd

**Report issued: 09 September 2010**



0621

**NOTE.**

These tests are covered by the Laboratory Flexible UKAS accreditation schedule.

Tests marked NT were not tested

Tests marked NA are not applicable to the product on test.

The laboratory has tested the products supplied by the client as sampled in accordance with their own requirements

**Exova Warringtonapt is an EC Notified Body Number 1104**

## CONTENTS

Test Conclusion	2
Authorisation	3
Contents	4
Test Details	5
Test Results	6
Observations and Comments	7
Power curve	8

## TEST DETAILS

### CLIENT DETAILS

Company Name The Parkside Group Limited  
Address Unit 5, the Willow Centre  
17 Willow Lane,  
Mitcham.  
Surrey.  
CR4 4NX  
Contact Mr David Trussel

### ORDER DETAILS

Order No. DT/2708  
Dated 27.08.10

### DEVICE DETAILS

Manufacturer The Parkside Group Limited  
Model No Axim TC 8802-00  
Closer type:  
With latch action.  
No backcheck.  
Delayed action Not possible.

Arm configuration:

Mounting: Transom mounted fixing position.

### TEST REQUIREMENTS

Test specification : APT1- DDA Power Curves on Door Closers

Test to clauses : N/a.

Closer strength: Size 2.

Corrosion resistance grade: N/a.

Special test requirements: Check opening moments (closer is power size 2)

Test reference numbers: 196747/c

Date sample received: 07 October 2005

Date test started: 02 December 2005

Date test completed: 05 December 2005

Other reports to be used in conjunction with this report: 194784/c

## TEST RESULTS

### Standard fixing position

No cycles completed.

Specification	Requirement	Test result
Cycles completed	0	0 cycles
Ambient temp.	15 - 30° C	21.5°C
Closer temp	Within 2° of ambient	21.5°C
Opening moment. Closer size 1	Max opening 0 - 4°	26.08Nm
	Max opening torque 0 - 30°	28.89Nm
	Max opening torque 30 - 60°	27.29Nm
Closing moment. Closer size 1	Max closing moment 0 - 4°	15.55Nm
Efficiency	Size 3 closer	60%

The Axim TC 8802-00 Transom mounted door closer has an opening force (0-30°) less than 30N when fitted to a minimum width door of 963mm, and has an opening force (30-60°) less than 22.5N when fitted to a minimum width door of 1212mm tested in laboratory conditions.

Therefore the suitable width of door for the Axim TC 8802-00 transom mounted door closer fixed in the above fixing position is 1212mm

NOTE 1 : The closing force at 4 - 0° is power size 2, due to falling between the 13 – 18Nm category.

NOTE 2 : BS 8300 Requirements are for the whole door set and therefore the minimum width of suitable door will increase when the door closer is fitted with all other items of ironmongery on site.

**Uncertainty of measurement**

Clause 7.1.1 of the standard specifies the following tolerances on values:

Mass in kg	± 2%	length in mm	± 2%	Angular position	± 2°
Force in N	± 2%	time in secs	± 5%	temp °C	± 2°C
Moment in Nm	± 2%				

The uncertainty of measurements calculated for a confidence level of 95% throughout these tests are within the limits of these tolerances.

## OBSERVATIONS AND COMMENTS

The Axim TC 8802-00 Transom mounted door closer has an opening force (0-30°) less than 30N when fitted to a minimum width door of 963mm, and has an opening force (30-60°) less than 22.5N when fitted to a minimum width door of 1212mm tested in laboratory conditions.

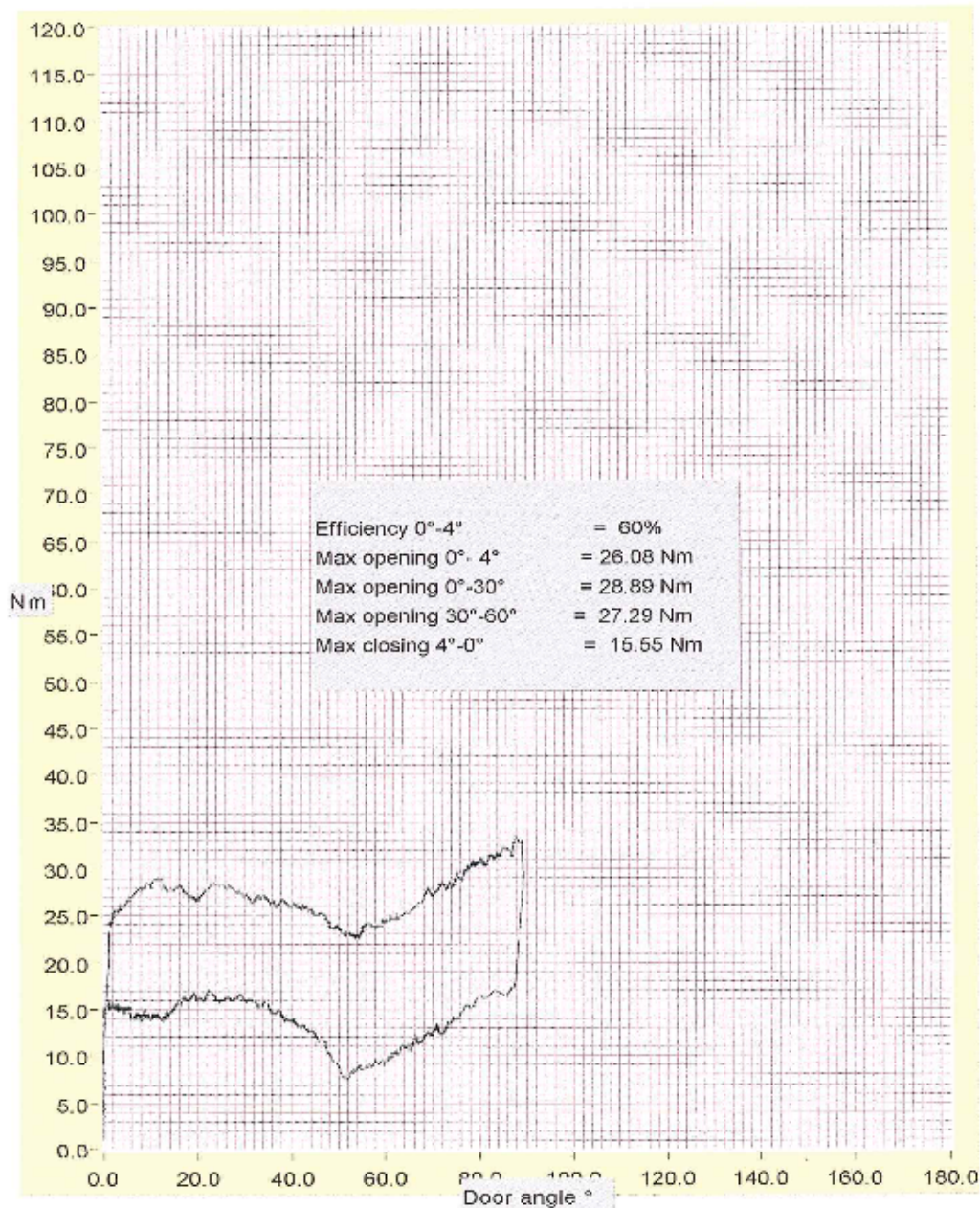
Therefore the suitable width of door for the Axim TC 8802-00 Transom mounted door closer fixed in the above fixing position is 1212mm

NOTE 1 : The closing force at 4 - 0° is power size 2, due to falling between the 13 – 18Nm category.

NOTE 2 : BS 8300 Requirements are for the whole door set and therefore the minimum width of suitable door will increase when the door closer is fitted with all other items of ironmongery on site.

## POWER CURVE

AXIM TC 8802-00 TRANSOM MOUNTED DOOR CLOSER (SIZE 2)  
 TRANSOM MOUNT FIXING POSITION  
 149784/c  
 40 KG DOOR 10 MM HINGE PROJECTION  
 05/12/05  
 0 CYCLES TRACE N°1 TEST ENGINEER S WILKES



Warrington APT Laboratories

----- END OF REPORT -----