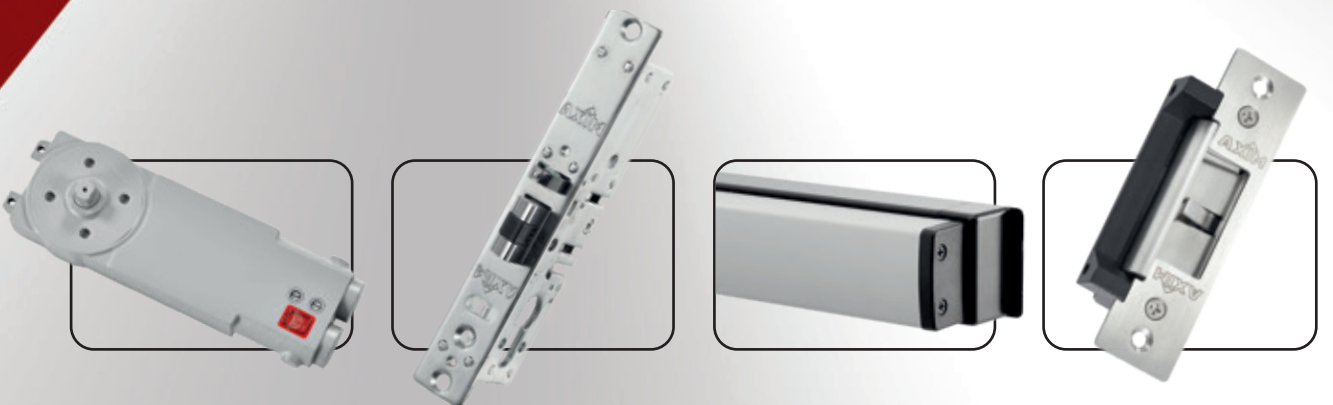




AXIM
ARCHITECTURAL HARDWARE



maximise without compromise



maximise without compromise

About Us

Axim Architectural Hardware is a division of TPG The Parkside Group Limited and was formed in 1987. Axim designs and supplies a comprehensive in-stock range of transom closers, panic exit devices, floor springs, electric strikes, deadlatches, flush bolts, letter plates, locks and handles.

As part of The Parkside Group Limited, a British privately owned company, Axim can quickly create new solutions to meet client, specifier and installer demands. In the UK, the Disability Discrimination Act (DDA) requires reduced opening forces. Axim, have tested and documented that its transom closers can achieve DDA compliance. Axim supplies most major European aluminium systems houses with its product solutions. For instance, the concealed transom closer range has a range of closing forces, with a variety of accessories to fit the precise door design. The Axim brand provides quality, longevity and reliability with a solution for every client's requirements.

All Axim products are available ex-stock from its Head Office located in Surrey, UK, to meet Just-in-Time production schedules. It has a network of key distributors who can cater for installation, maintenance and over the counter trade customers.

Axim is the name for door hardware for commercial aluminium door sets, creating a single source, branded solution; end users have a single point of contact for all guarantees, test certificates, as well as installation and maintenance for all their door hardware.

Axim is a member of The Council for Aluminium in Building and The Guild of Architectural Ironmongers. Membership and association with these bodies provides reassurance that all Axim products conform to latest building regulations and trade association guidelines.

Closers

An aesthetically pleasing solution

TC Series

Concealed Overhead Transom Closers

The TC Series

Market leading through durability, an Axim concealed closer is a hidden closing solution held integrally in the door leaf and transom. This means that the door requires no external hardware creating an aesthetically pleasing solution.

The correct closing solution is dependent on the door and configuration. To this end, Axim has three power sizes and "no hold" or "hold open" control options in each concealed Transom Closer.

TC-8800

The TC-8800 range of Axim closers are a universal range of closers to suit most aluminium door sets. For specification purposes it has three strengths of closing dependent on the door width. These three types of concealed closer cater for small to large doors, up to 1150mm wide, and for severe weather conditions where additional closing strength is required.

All of these ranges have a variety of door control options, including no hold opening which is suitable for low traffic areas, hold open at 90 degrees, suitable for high traffic areas, and hold open to 105 degrees, where protruding handles obstruct the clear opening.

To ensure the continued performance of the door a back check at 70 degrees comes as standard. Closing forces vary between 18Nm and

33Nm, depending on the situation and the size of the door. To optimise the closing and smooth operation the TC range is fully adjustable both vertically and laterally. The door set and transom closer have two installation options, side and end load. The end load condition is suitable for door sets with an anti-finger trap stile. With the weight of frame and glass the transom closer has a maximum weight of 100Kg, without impairment to performance. The closer comes with a standard 30 month guarantee, but has a design life in excess of 10 years.

Complementing this range is the TC-9900, which is a universal replacement unit with fixings, with all the functionality of the TC-8800.



TC-8800

TC-9600

Axim TC-9600 Series Transom Closer is double or single action with a 70mm Pivot Point. Extended spindle side load or end load fittings are available.

TC-9900

When other leading concealed transom closers have failed or as part of a planned maintenance schedule, the TC-9900 offers a simple solution. Offering all the functionality of the TC-8800, the TC-9900 can be installed quickly and simply to replace the closer without costly modifications to the door. A variety of fixings are available to suit the replacement situation.

TC-9900 ADJ

The Axim TC-9900 ADJ Series is an adjustable door closer that has been developed to provide the market with a universal door closer. This closer will offer the answer for new installations and for door maintenance where other leading transom closers have failed and a replacement closer is necessary.

The Axim TC-9900 ADJ will replace the Axim 8800 series and other leading brands of transom closers without costly modifications to the door or frame. Independent, fully adjustable closing and latching speed controls with captivated screws prevent accidental removal. Adjustable between sizes 1-4 and suitable for doors up to 1150mm wide and 100 Kgs in weight. Universal fittings are included, and fitting instructions are supplied with each body unit with a separate sheet covering replacement procedures.



TC-9900 ADJ

Floor Springs



The Axim Series of floor springs are closing devices that are discreetly installed into the threshold of the door.

Floor Springs



Floor Mounted Door Springs

The FS Range

The Axim Series of floor springs are closing devices that are discreetly installed under the threshold of the door. By installing the closing device into the floor, the mechanism can handle larger, heavier doors and is ideal for high traffic, commercial applications. Due to this support, the floor spring is robust and able to provide greater longevity.

Series FS-6000 For doors up to 150Kg

The Series FS-6000 is a universal floor spring, providing solutions for both left and right hand doors and, if required, a double action operation is available. Dependent on the application "no hold" and 90 degree "hold open" options are available.

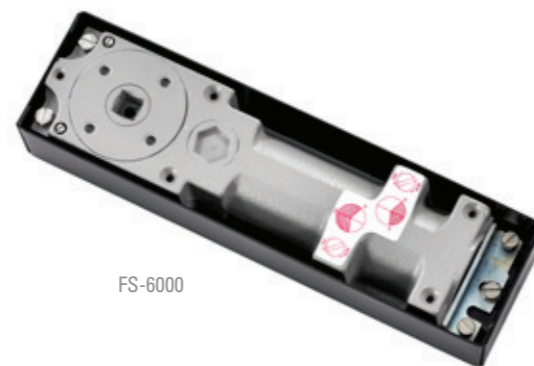
The floor spring enjoys full hydraulic control which is provided by two valve screws creating a backcheck for safety between 70-180 degrees, a closing range of 180-15 degrees and a latching range of 15-0 degrees.

Naturally all applications are different. The Axim 6000 Series provides adjustment within the unit to ensure precise operation as well as extended spindle inserts (up to 50mm) to ensure that all door types can be catered for.

The typical closing force is 28Nm for doors up to 150Kg and 1200mm wide, with a "light spring" option for up to 800mm which creates a closing force of 15Nm.

Series FS-4000 For doors up to 120Kg

The Axim Series FS-4000 is a universal medium floor spring for doors up to 1200mm wide and weights up to 120Kg. The FS-4000 provides solutions for both left and right hand doors and, if required, a double action operation is available. Dependent on the application "no hold" and 90 degree "hold open" options are available.



FS-6000

Two separate valve screws control the closing and latch speeds. The device comes with a backcheck at 130 degrees and closes through to 15 degrees where latching occurs.

The typical closing forces available are 28Nm for doors between 915-1200mm and 18Nm for doors 915-1200mm. An "Axim light" is available for narrow doors with a closing speed of 15Nm.

To cope with different door types and accessories the base unit has different spindles which must be specified, (S) square taper or (F) flat taper. A variety of extended spindles to suit different door heights are available. To create a sleek finish, cover plates can be ordered in stainless steel.

Series FS-8500 For doors up to 180Kg

The Axim Series FS-8500 floor spring has a compact size 306x108x39mm which keeps floor preparation to a minimum. The floor spring is ideal for high traffic or double doors as the mechanism synchronises automatically, allowing constant opening/closing cycles throughout the operating range.

This fast track install floor spring caters for doors up to 180Kg. The light option offers a closing force of 16Nm for doors up to 800mm wide and the medium 28Nm for door widths up to 1150mm.



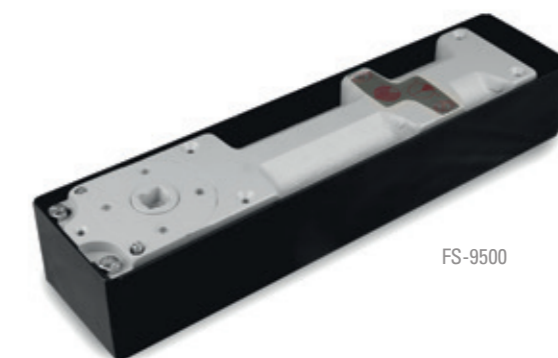
FS-8500

The Axim FS-8500 provides solutions for both left and right hand doors and, if required, a double action operation is available. Dependent on the application "no hold" and 90 degree "hold open" options are available.

Two separate valve screws control the closing and latch speeds. The device comes with a backcheck at 70-130 degrees and closes through to 15 degrees, where latching occurs.

Series FS-9500 For doors up to 300kg

The FS-9500 Floor Spring is one model with 4 optional spring strengths, 1-4 to suit all applications. Non handed for both open in and open out with changeable spindle inserts. Max Weight 300kg. Hold open or No Hold Open (HO / NHO)



FS-9500

FC Series



Whatever the project type, specifiers can rely on Axim PR Series to supply the solution.

Exit Device



Surface Mounted Door Closer

The FC Range

In applications where a concealed closer is not suitable, such as bridging thermal breaks or retro-fit, the FC Range of surface mounted closers provides a solution.

FC-1000

To co-ordinate or contrast with the door finish the FC-1000 range has a die cast aluminium body in a variety of standard anodised finishes such as silver, dark bronze and gold. Each closer comes with a dress plate to conceal the internal fixings. To complement the door other finishes are available on special request. The slim line design is suitable for doors that open out against adjacent walls with a closing range of 180 degrees with either right hand or left hand opening. The Axim 1000 series has been included in fire tests to BS 476-22 1987.

Subject to the door size, two door closing strengths are available for widths up to 800mm, with a closing force of between 19Nm and 23Nm, ensuring smooth operation hydraulic adjustment is provided with two valve screws

from 180-15 degrees of closing and 15 degrees of latching. The Axim FC-1000 range has a 30 month guarantee and a design life in excess of 10 years.

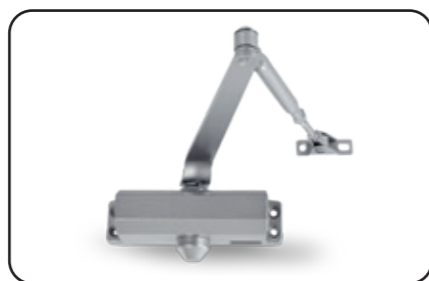
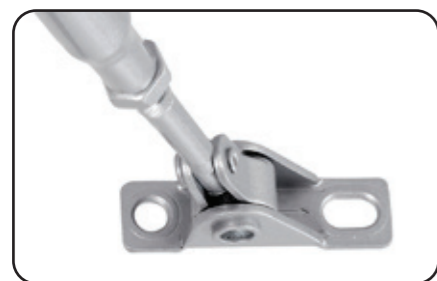
FC-1500

The FC-1500 provides all the functionality of the FC-1000, but with added features. The FC-1500 is a true multi-strength surface mounted closer. The single unit can be adjusted to accommodate a variety of door widths and to provide exacting closing forces for the application.

The backcheck can be adjusted to suit, providing a solution where there are internal or external obstructions. Delayed action is available as an option giving a timed hold open from 180-70 degrees allowing unhindered access, particularly useful on hospital doors.

FC-3000

The FC-3000 is a budget closer offering all the functionality of the FC-1000, but without the dress plate of the FC-1000.



Panic Exit Devices

Fundamentally, Emergency and Panic Exit Devices must provide an easy method of escape for building occupants in the event of a fire or some other emergency, as well as provide security against intrusion and burglary. Within these scenarios there are two types of users. Those that have been trained to use the device, e.g. office workers, or those that are not trained in the event of an emergency evacuation of the building, e.g. shoppers in a retail outlet. These different needs are covered in BS EN 179 – emergency exit devices operated by a lever handle or pushpad and BS EN 1125 – panic exit devices operated by a horizontal bar. Within these standards, it is classed that a horizontal bar device is used for buildings where it is envisaged that the users will not have been trained in evacuation techniques.

The Axim PR Series provides solutions which comply to both standards ensuring that, whatever the project type, specifiers can rely on Axim PR to supply the solution.

Axim PR Series

The Axim PR Series is a range of horizontal push bars which are compliant to BS EN 1125.

Axim PR "P" Series

The Axim Series PR-7085P and PR-7095P are emergency exit devices installed to the opening door jamb with a push paddle handle with engraved "PUSH", compliant to BS EN 179. The push paddle handle is finished in

satin chrome and the operating paddle handle and lever does not exceed a 120mm x 186mm projection. Standard, mortice rim cylinder lock available as an option.



PR-7085P

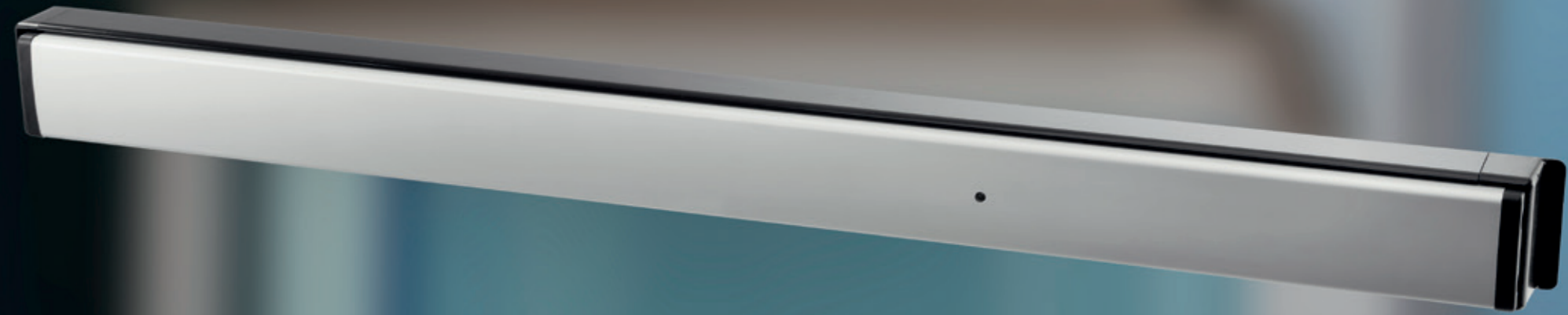
The Axim Series PR-7095P is a rim mounted device with a single point lock at the latch with optional external key access. The Axim Series 7085P is a concealed rod panic exit device which provides two point locking at the top and the bottom of the door, also with optional external key access.

The concealed rods are steel, 8.5mm diameter and provide a 16mm bolt throw. The throw can be adjusted to suit the application. Suitable for any door width and the standard model height is 2135mm and 300mm coupling rods are available for taller doors.

The Axim Series PR-7085P and PR-7095P both use plated steel and stainless steel components with heavy duty lever springs and internal mechanisms for durable operation.

Exit Device

The Axim range of horizontal cross bars and push bars are compliant to BS EN 1125.



Exit Device

Axim PR-7085 and PR-7095 Series

The Axim PR-7085 and PR-7095 are horizontal crossbar panic exit devices. The crossbar is extruded aluminium in a silver satin, dark bronze, green or black anodised finish. All housings and lever arms are finished in an abrasive resistant finish to complement the crossbar anodising. The exit devices have nylon bushes for silent operation, with heavy duty lever springs for durable operation of the lever arms. They are suitable for narrow and wide stile doors. The latches can be retracted to allow access with a cylinder key or a concealed screw mechanism. All fixings are concealed to ensure an aesthetically pleasing finish. The exit device houses do not exceed 120 x 186mm projection.

The Axim PR-7085 is a concealed vertical rod panic exit device which provides two point locking; at the top and bottom with optional external key access. The internal mechanism is manufactured from stainless and plated steel, with



PR-7085

8.5mm diameter steel operating rods providing a 16mm bolt throw which are adjustable to ensure correct alignment.

The Axim PR-7095 is a rim mounted panic exit device with a single point latch lock with an optional external key access. The standard model is suitable for doors of up to 1155mm wide, with an option for extra wide doors of up to 1220mm. Both the standard and extra wide options can be cut down to suit the application.

Axim PR-7100 and PR-7200 Series

The Axim PR-7100 is a concealed, vertical rod panic exit device which secures the top and bottom of the door, except during the operating cycle when the rods are retracted with cylinder key or when the touch bar is locked down with an Allen key. The internal mechanism is manufactured from stainless and plated steel, with 8.5mm diameter steel operating rods that provide a 16mm bolt throw. Optional external key access also available.

The Axim PR-7100 is an aesthetically pleasing, handed, horizontal soft touch push bar panic exit device. The push bar is extruded aluminium in an anodised finish with coloured alloy end caps to match. The soft touch push bar offers minimal obstruction with a 66mm projection. The device has plated steel and stainless steel internal components and, for long term durable operation, has heavy duty internal lever springs. All mounting screws are concealed

Emergency and Panic Exit Devices must provide an easy method of escape for building occupants in the event of a fire or other emergencies, as well as provide security against intrusion and burglary.

The Axim PR-7200 Series is a full width soft touch panic exit device which ensures that whatever the project type, specifiers can rely on Axim PR-7200 Series to supply the solution. The Axim PR-7200 Full Width Series is compliant to BS EN 1125.

The Axim PR-7200 is a concealed, vertical rod panic exit device which secures the top and bottom of the door, except during the operating cycle



PR-7200

when the rods are retracted with cylinder key or when the touch bar is locked down with an Allen key (dogged). The internal mechanism is manufactured from stainless steel and plated steel, with 8.5mm diameter steel operating rods that provide a 16mm bolt throw and optional external key access is also available.

Non-hand, the push bar is extruded aluminium in an anodised finish and all mounting screws are concealed. Available in 3 standard sizes: PR-7200-36, PR-7200-42 & PR-7200-48 all of which can be cut to suit your required sizes.

Door Handles

Quality products at an affordable price

Door Handles

Door Handles

Axim PH-2100 Series Paddle Handles

The Axim PH-2100 Series Paddle Handle provides the market with a quality product at an affordable price. These handles have been designed for narrow stile hollow metal and timber doors. The simple push pull operation of the Axim PH-2100 paddle handle offers a stylish alternative to a conventional lever handle. They can be fitted to either side of the door and a standard rim cylinder can be fitted to the reverse side for access. The Axim PH-2100 lever handle is designed to operate with the Axim LK-2100 series latch lock.



PH-2100



LH-725

A range of finishes are available:

- MILL FINISH for painting
- SILVER Anodised
- BRONZE Anodised
- POLISHED Sterling Silver
- WHITE Powder Coated
- BLACK Anodised



Axim LH-7 Series Lever Handles

The LH-7 Series handles are available to suit our panic release products and allow external access when used in conjunction with a suitable PR Series product. The LH-7 Series lever handles also suit various depths of door stile.

Axim HD-80 & HD-82 Tubular Handle Sets

The Axim HD-80 series of full height tubular handles are designed for use with aluminium, steel and solid timber doors. Extruded aluminium tubes can be cut to suit the individual requirements after the door has been installed making them extremely suitable for high traffic areas. The 2500mm x 40mm tubular handles include extruded brackets with a minimum wall thickness of 5mm deflection for rigidity and capped tube ends for pleasing aesthetics.

The Axim HD-82 stainless steel tubular handles compliment the series and are available in 2500mm x 38mm sets with either cranked or straight handle brackets.

Axim HD-90 Pad Handle

The Axim HD-90 pad handle is the perfect set choice for commercial aluminium doors. This ever popular handle is easily installed, comes complete with all the required fixings and a 12 month guarantee.

Axim HD-9110 Entrance Pull Handle Sets

The Axim HD-91 series of stainless steel entrance door handles are comprised of three different set styles and come complete with fixings.

Handles available are:

- Cranked – available in 4 different sizes 300mm x 25mm & 300mm, 425mm & 600mm x 32mm dia.
- Semi circular – available in 1 size 300mm x 32mm
- T bar - available in sizes 600mm & 900mm x 32mm dia



HD-9110



HD-90

Axim LP-500 Letter Plate

Axim's LP-500 letter plate is primarily the aperture for the delivery of letter post items when fitted in accordance with the manufacturer's instructions. The Axim LP-500 takes into account security, impregnability, safety and performance for the recipient, and ergonomic efficiency for delivery personnel.

LP-500 feature a full 180 degree opening and fully weatherproofed outside flap for easy operation. The outside flap incorporates a unique drainage channel for protection of mail. Blind fixing provide extra security. The rectangular cut out area eliminates the need for additional fixing holes.



LP-500



Locks & Accessories

Axim LK-1800 Mortice Hook Lock

The Axim LK-1800 mortice hook lock provides the market with a quality product at an affordable price. This lock has been designed for narrow stile hollow metal doors. Hook locks provide security deadlocking for a variety of aluminium doors including swing and sliding applications.

The LK-1800 hook lock is a heavy duty dead lock to provide good security against the use of a tools which may try to part the door from the frame. The hook clasps the keep and the fixed brass bar under the hook is used to stop lifting the door and also acts as a guide for the lock to sit correctly. The hook bolt is constructed in a 5 ply laminated construction, with the centre core case hardened, complete with hardened roll pin to resist hacksaw attack. These locks are suitable for aluminium or steel door applications requiring double or single action, centre hung or offset, and are available in 25mm, 30mm and 40mm backset options.

The Axim locks are designed to accept standard round and europrofile cylinders and come with a natural satin silver anodized faceplate. The steel case and mechanism are zinc coated to resist corrosion.



LK-1800



LK-2100

Axim LK-2100 Dead Latch Series

The new fully reversible Axim LK-2100 standard duty deadlatch range offers specifiers a cost effective non-handed deadlatch. The Axim LK-2100 reversible deadlatch allows installers to carry one stock item instead of two which equates to a reduction in stock levels, therefore achieving cost savings.

The Axim LK-2100 reversible deadlatch offers the flexibility of traffic control during and after business hours. The Axim LK-2100 deadlatch features a fully non-handed reversible latch bolt. A reverse turn of the key while the bolt is held retracted retains the latch bolt in the case.

The Axim LK-2100 deadlatch product is an ideal product to be used and specified alongside the Axim ES-2200 Electric Strike range offering a remote access control solution for doors.

The LK-2100 will accept euro and round cylinders and 3 back sets are available: 25mm, 28mm and 38mm. Strike plates are available to suit single and double door applications. Lower stock levels are required which equates to cost savings. The Axim LK-2100 deadlatch is an all metal case complete with the main latch body structure being constructed to prevent certain unauthorised case entry. Available with either flat face or radius face faceplates that are ordered as separate items. Featuring a nylon insert which is added to the latch bolt to prevent friction in operation. The latch bolt incorporates 2 hardened steel pins and an anti-thrust tab with hardened tip to prevent excessive wear.

Axim ES-2200 Series Electric Strike

The Axim ES-2200 series of electric strikes are an ANSI style door release, complete with stainless steel short or long faceplates for use in metal or timber door frame applications. The electric release is designed to work with most leading brand deadlocking night latch locks.

The Axim ES-2200 series are shipped as fail secure and can be converted to fail safe mode by the simple removal of a screw. The Axim ES-2200 can also be set to 12V or 24V by simply reconfiguring the wires in a different sequence.



ES-2200

ES-2200

Features:

The ES-2200 is an easy replacement for most leading brand ANSI electric releases and is supplied with 250mm of cable and has a 450kg Holding Force. Simple Fail Safe/Fail Secure Changeover with easy installation. 12/24V AC/DC on-site settable. AC Fail Secure only & DC Fail Safe/Fail Secure. Long and short stainless steel faceplates are provided. 10, 25 & 50mm extension lips are available. Power consumption and current draw: 12/24V DC – 300mA 24/24V DC – 150mA.

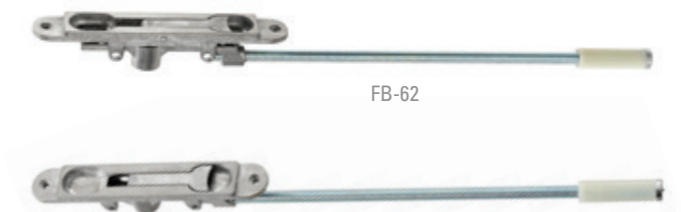
Axim ES-2200 Types:

- ES-2200-S Fail Locked/Unlocked with Long/Short Faceplate
- ES-2200-M Fail Locked/Unlocked with Long/Short Faceplate (Monitored)
- ES-2200-DM Fail Locked/Unlocked with Long/Short Faceplate (Dual Monitored)
- ES-2200-EL10 Extension Lip (10mm)
- ES-2200-EL25 Extension Lip (25mm)
- ES-2200-EL50 Extension Lip (50mm)

Axim FB-62 Extension Flush Bolts

Axim has a range of flush bolts which include the FB-62, FB-63, FB-64 & FB-65. The FB Series are available as flat or radius bolts. Flush door bolts are rebated into a door, and are normally operated by a small lever which sits perfectly flush both when the bolt is engaged and the doors closed. For maximum security Axim flush bolts secure the slave leaf of a pair of doors. A standard installation requires two flushbolts morticed into the top and bottom of the door. For maximum security the Axim flush bolt has a hardened steel bolt, zinc plated with an anti-rattle sleeve.

Axim's FB-62 extension flush bolts are a range of lever action flush bolts, primarily intended for mounting in the leading edge or inside face of the slave leaf of a pair of doors. FB-62 door bolts are guaranteed for 30 months and key features include smooth lever action, available in 2 lengths, 305mm & 152mm to suit differing door heights. Silver satin chrome, bronze powder coat or a mill finishes. Shot bolt: 18 mm diameter and a die cast zinc alloy body mechanism. The floor socket keep is sprung loaded, dust resistant with a satin chrome finish.



FB-62

RADIUS FB-62

For further information about any
of the goods and services provided
by Axim, contact us at the address below.

Axim Architectural Hardware, The Willow Centre,
17 Willow Lane, Mitcham, Surrey, CR4 4NX

T: +44 (0)20 8685 9685 • F: +44 (0)20 8646 5096 • E: axim@parksidegroup.co.uk

www.axim.co.uk

