



AXIM
ARCHITECTURAL HARDWARE

LK2100
Reversible Deadlatch



maximise without compromise

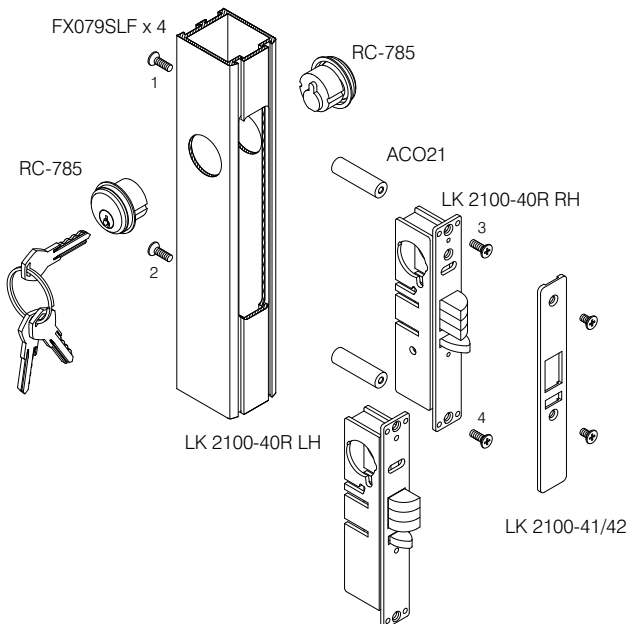


Axim LK2100 Reversible Deadlatch

The new fully reversible Axim LK-2100 standard duty deadlatch range offers specifiers a cost effective non handed deadlatch. The Axim LK-2100 deadlatch allows installers to carry one stock item instead of two which equates to a reduction in stock levels therefore achieving cost savings. The Axim LK-2100 reversible deadlatch offers the flexibility of traffic control during and after business hours.

The Axim LK-2100 deadlatch features a fully non-handed reversible latch bolt. A reverse turn of the key while the bolt is held retracted retains the latch bolt in the case, allowing two-way traffic which is ideal for use in busy commercial applications e.g. hospitals, banks, shops which may require free access and exit at certain times, and controlled access and free exit at other times.

The Axim LK-2100 deadlatch product is an ideal product to be used and specified alongside the Axim ES-2200 Electric Strike range offering a remote access control solution for doors. Axim's innovative development solutions on the LK-2100 Reversible deadlatch make the LK-2100 series a market leading product which now surpasses other leading brands.



Features:

- Fully reversible latch bolt without opening the deadlatch case
- Will accept euro and round mortice cylinders
- 3 Backsets available: 25mm, 28mm and 38mm
- Strike plates are available to suit single and double door applications
- Lower stock levels required – cost savings
- The Axim LK-2100 deadlatch is an all metal case complete with the main latch body structure being constructed to prevent certain unauthorised case entry
- The Axim LK-2100 deadlatch is available with either flat face or radius face faceplates that are ordered as separate items
- A nylon insert is added to the latch bolt to prevent friction in operation
- Anti thrust tab with hardened tip to prevent excessive wear

www.axim.co.uk

For further information about any of the goods and services provided by Axim, contact us at the address below.

Axim Architectural Hardware, The Willow Centre, 17 Willow Lane, Mitcham, Surrey, CR4 4NX. Tel: 0208 685 9685 • Fax: 0208 646 5096 • Email: axim@parksidegroup.co.uk

AXIM
ARCHITECTURAL HARDWARE

gai associate member

CIAB
Council for Aluminium
in Building
Member