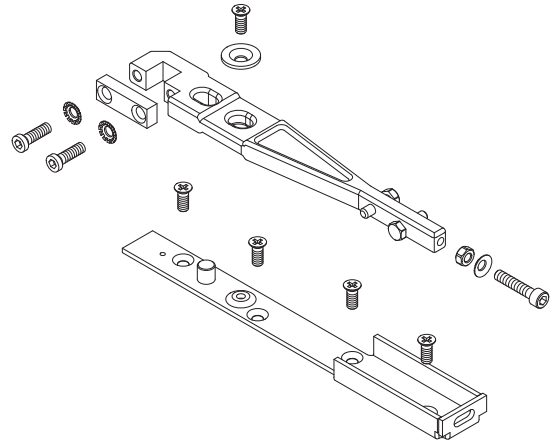
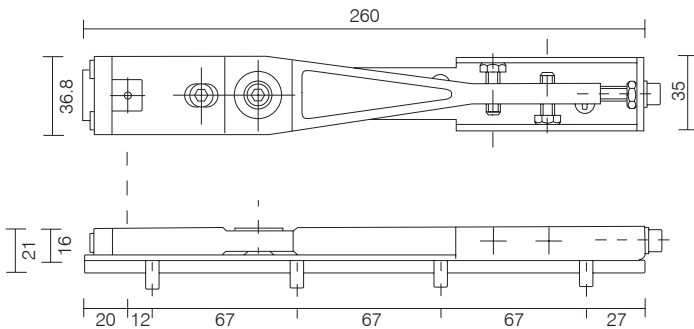
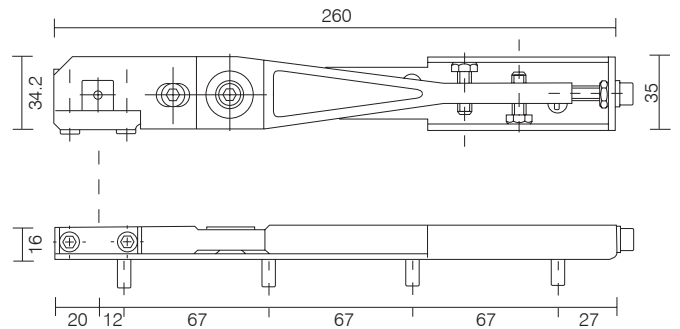
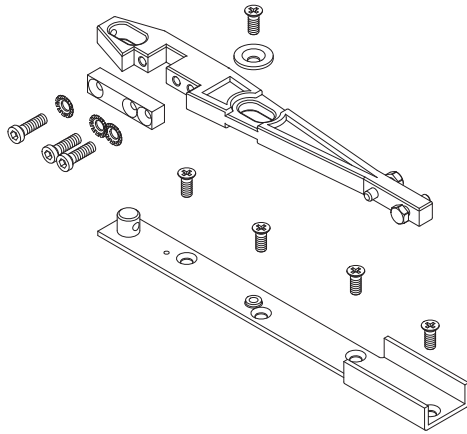


**End load top arm & spacer bar TC-8800-15**  
For use on end loading and anti-finger trap doors.  
When using standard door rails spacer bar is not required.

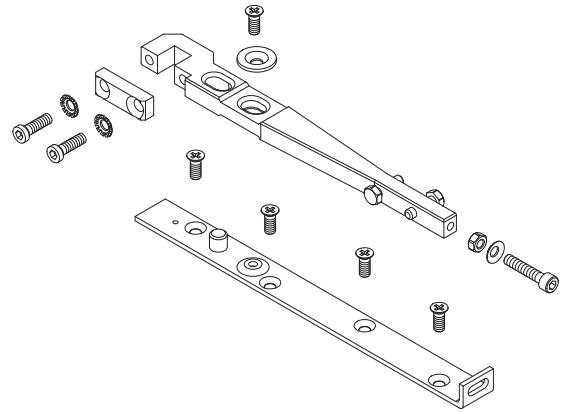
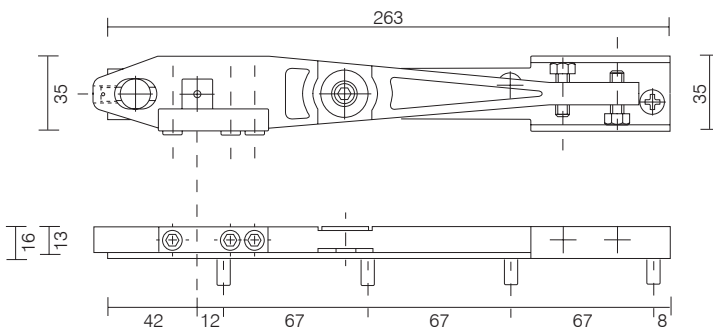


**Std. top side load arm TC-8800-13**  
For use on side loading and anti-finger trap doors.

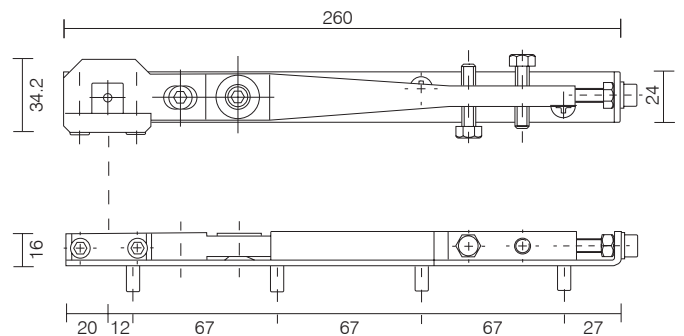


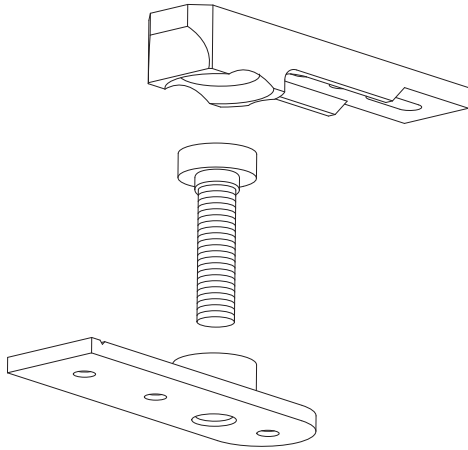


**Top side load arm TC-8800-T13**  
For use on side loading doors.  
(Arm supplied with standard transom closer kit)

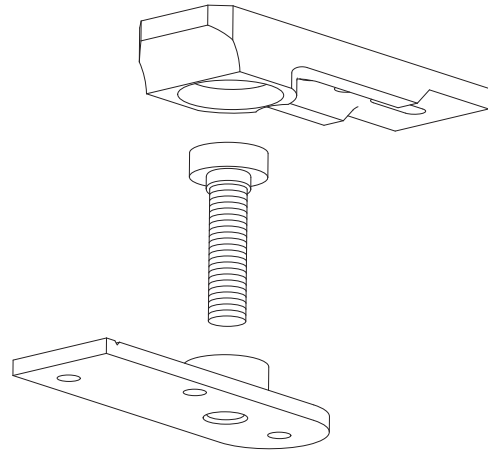


**Universal arm TC-8800-01**  
For use on side loading and armour glass doors

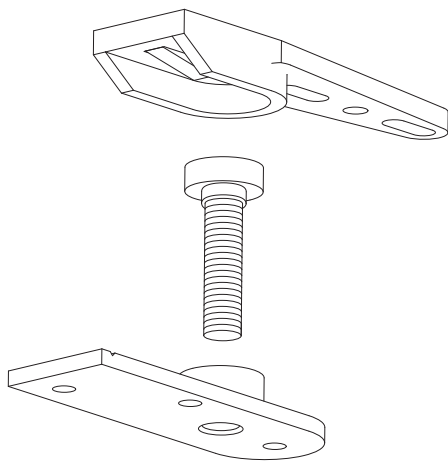




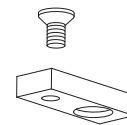
Std bottom pivot assembly  
**TC-8800-02**



Heavy duty bottom pivot assembly  
**TC-9500-17**. Used with anti finger-trap doors



End load bottom pivot assembly  
**TC-8800-14**



Alternative bottom bearing plate for use with  
thresholds supplied as standard with all bottom  
pivot assemblies