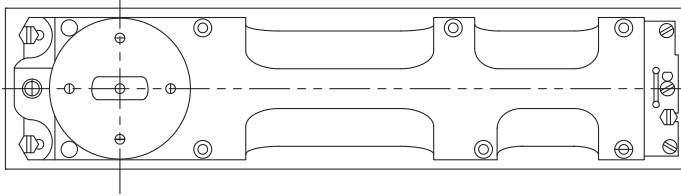
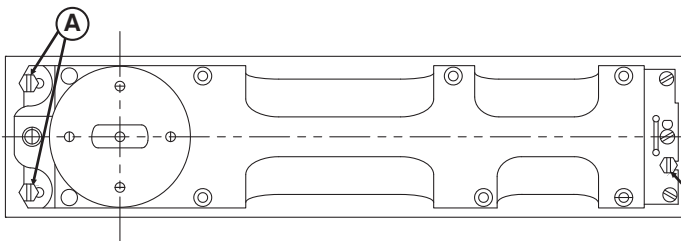


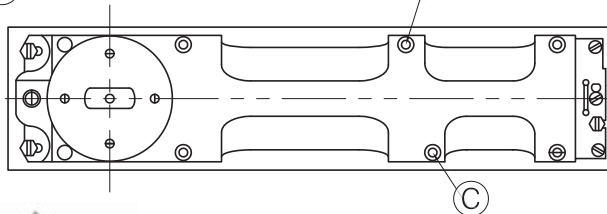
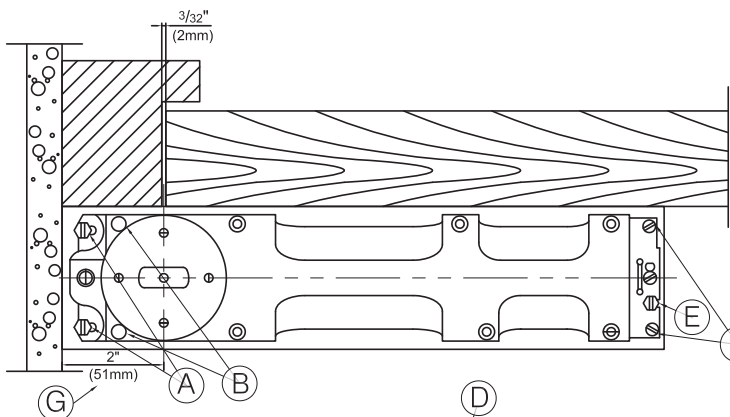
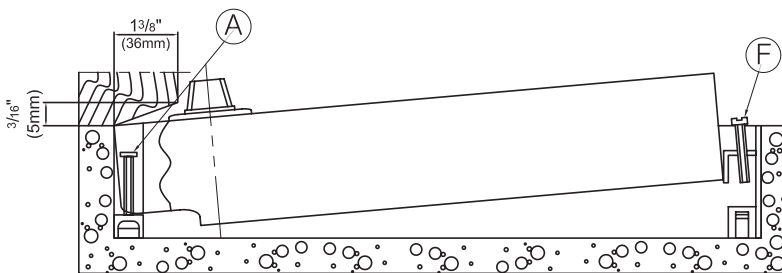
**Right Hand Door  
(Left-Hand Reverse Bevel)**  
Loosen mounting screws **(A)** and **(E)**  
Move closer in cement box as illustrated.



**Double Acting Door**  
Floor closer should be positioned in center of cement box.



**Left-Hand Door  
(Right-Hand Reverse Bevel)**  
Loosen mounting screws **(A)** and **(E)**  
Move closer in cement box as illustrated.



**Installation**

- 1 The cement case must be installed to allow for a pivot center-line dimension of  $2\frac{3}{4}$ " (70mm) backset from finished door jamb. The spindle backset **(G)** can be adjusted  $+\frac{1}{8}$ " (3mm) within the cement case.
- 2 The cement case top must be flush with the finished floor. The closer body can be raised approximately  $\frac{1}{8}$ " (3mm) with screws **(B)** & **(F)**. The Closer Must Remain Level. Use the appropriate spindle size to achieve the desired clearance.
- 3 Adjust the closer body as required for center-hung or offset applications. Use screws **(A)** & **(E)** to secure the closer body in the cement case.
- 4 Hold-open: available for  $90^\circ$ ,  $105^\circ$  or no hold open. Without hold open, the max door opening can be  $180^\circ$ .

**Speed Adjustable**

- 1 **Valve D:** Closing speed adjustable between  $180^\circ \sim 15^\circ$  and (in condition of no hold open)
- 2 **Valve C:** Closing speed adjustable between  $15^\circ \sim 0^\circ$  angle



**The Parkside Group Ltd**

The Willow Centre  
17 Willow Lane, Mitcham, Surrey, CR4 4NX  
Tel: 020-8685 9685 Fax: 020-8646 5096  
Email: axim@parksidegroup.co.uk  
Web Site: www.axim.co.uk

SCALE	NTS @A4
DATE	JULY 2017
For scaled technical or CAD drawings, please contact AXIM.	