

MAXIMUM SECURITY

hardened steel bolt, zinc plated with anti-rattle sleeve.
18mm bolt stroke.
7mm zinc plated steel rod with 40mm thread length, easily adapted for non-standard door installations.
Two lengths available 305mm (12 inch) & 152mm (6 inch).
"Centre Punch" tip to mark centre of keep.

Die cast zinc alloy body mechanism.
Fixing holes tapped M5.
Fixings included.
Deep finger recess and large lever for ease of operation.
Corners 2.5mm radius for easy matching of cut out.

FINISHES AVAILABLE

Mill finish - for customers own finish.
Silver - Satin chrome.
Bronze - Powder coat.

PRODUCT CODES			
LENGTH	FINISH	FLAT	RADIUS
305mm (12 inch)	MILL	62.00F12	62.00R12
	SILVER	62.01F12	62.01R12
	BRONZE	62.02F12	62.02R12
SHIPPING WEIGHT 2.52Kg. PER 10			

LENGTH	FINISH	FLAT	RADIUS
152mm (6 inch)	MILL	62.00F06	62.00R06
	SILVER	62.01F06	62.01R06
	BRONZE	62.02F06	62.02R06
SHIPPING WEIGHT 2.05Kg. PER 10			

Bolt guide by door manufacturer.

Floor Socket Keep

Sprung loaded, dust resistant, satin chrome finish.

PRODUCT CODE	SOCKET KEEP
	62.035
SHIPPING WEIGHT 2.52Kg. PER 10	

GUARANTEE

AXIM FLUSH BOLTS ARE GUARANTEED FOR 30 MONTHS FROM THE DATE OF MANUFACTURE AGAINST DEFECT IN MATERIAL AND WORKMANSHIP. THIS GUARANTEE IS VOID IF THE PRODUCT HAS BEEN INCORRECTLY INSTALLED OR DAMAGED IN USE. CLAIMS FOR DAMAGE INCURRED OR WORK DONE THEREON WILL NOT BE ACCEPTED.

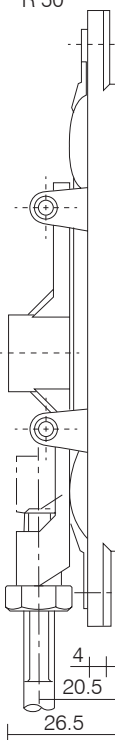
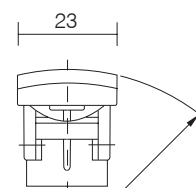
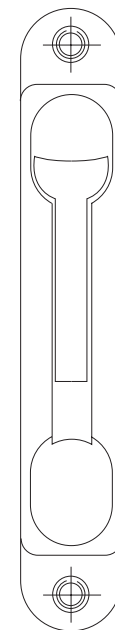
AXIM RESERVE THE RIGHT TO UPDATE ITS PRODUCT SPECIFICATIONS WITHOUT PRIOR NOTICE.



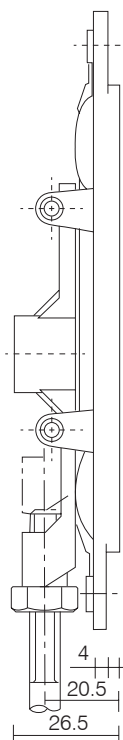
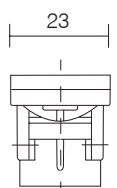
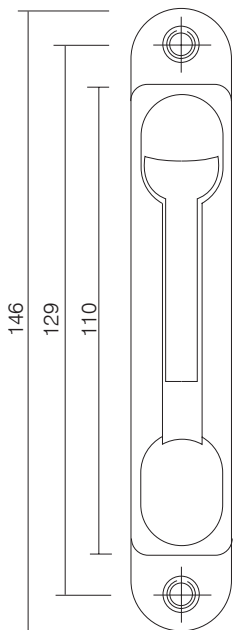
THE PARKSIDE GROUP LTD

THE WILLOW CENTRE
17 WILLOW LANE, MITCHAM, SURREY, CR4 4NX
Tel: 020-8685 9685 Fax: 020-8646 5096
Email: axim@parksidegroup.co.uk
Web Site: http://www.axim.co.uk

RADIUSED FACED



FLAT FACED

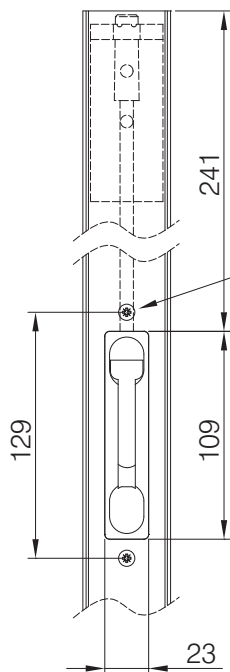


SCALE NTS @A4

DATE MARCH 2014

For scaled technical or CAD drawings, please contact AXIM.

Use flush bolt guide FB-62-040
to support top of flush bolt



Flush bolt (FB6200) used at
top and bottom of stile for
locking purposes

Drill & csk. for M5 typ.

Rout out cutout using
5mm cutter to achieve
2.5mm rads in corners

